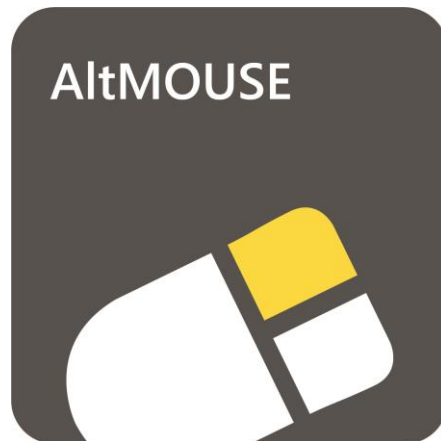




*Work Smart - Feel Good*

## Quick Start



## Index

Preparation .....	3
Startup for the first time .....	8
Support .....	9

## Preparation

For a successful installation of AltMOUSE on your computer, you will need to have sufficient rights on your computer. If you do not succeed in installing AltMOUSE via the producer in this document, please contact your IT department to check whether you are allowed to install this program.

If you are working within a Citrix or other Terminal Server environment, you will not be able to install AltMOUSE via this route. Please contact your internal IT department for assistance.

You can trial AltMOUSE for free for 20 days. You will need a new license key (data.key file) when you would like to continue using AltMOUSE after this period.

## Installation steps

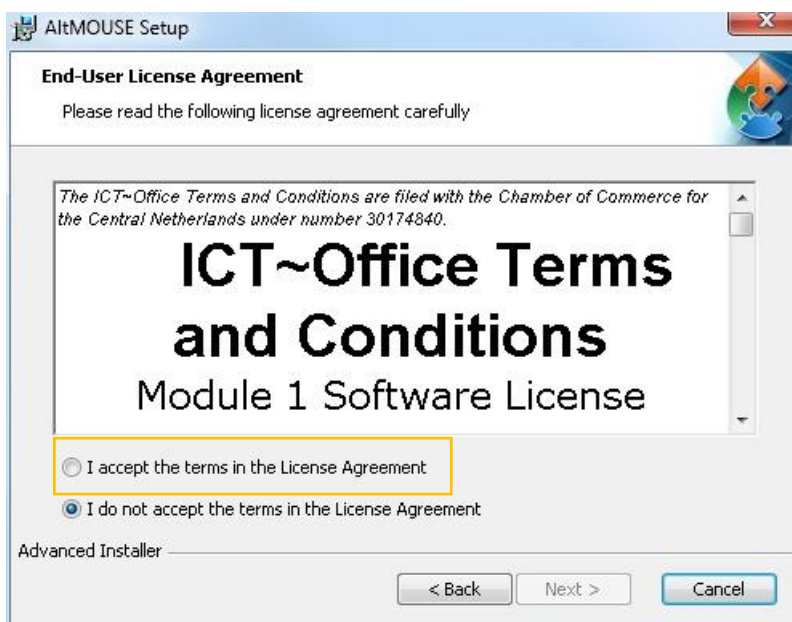
The installation file can be download here:

<https://www.bakkerelkhuisen.nl/support/software/altmouse/>

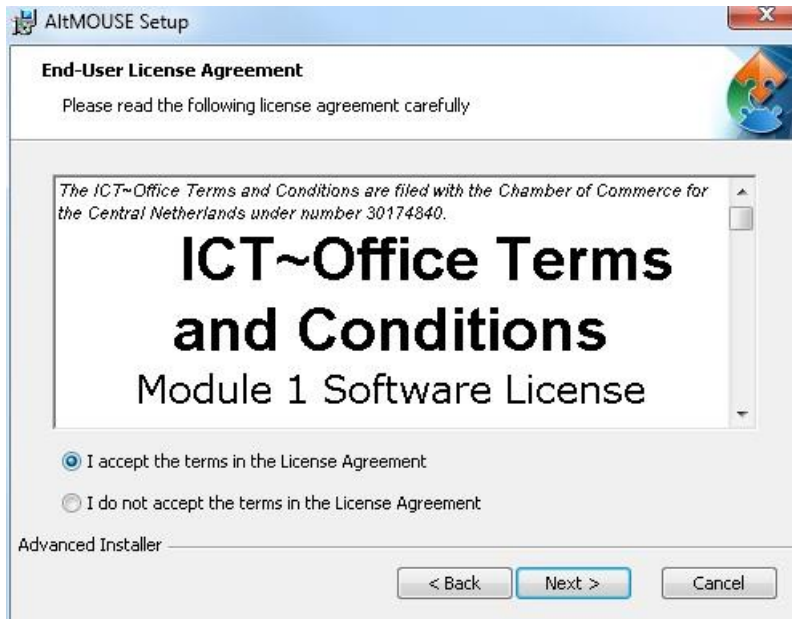
Open the file AltMOUSEv2.EXE to start the installation.



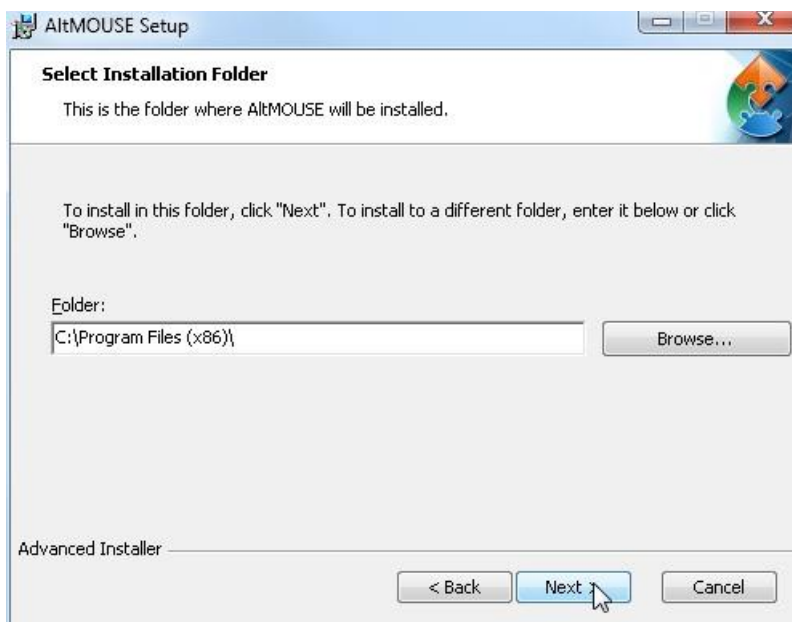
Click 'Next'



Select 'I accept the terms in the License Agreement'

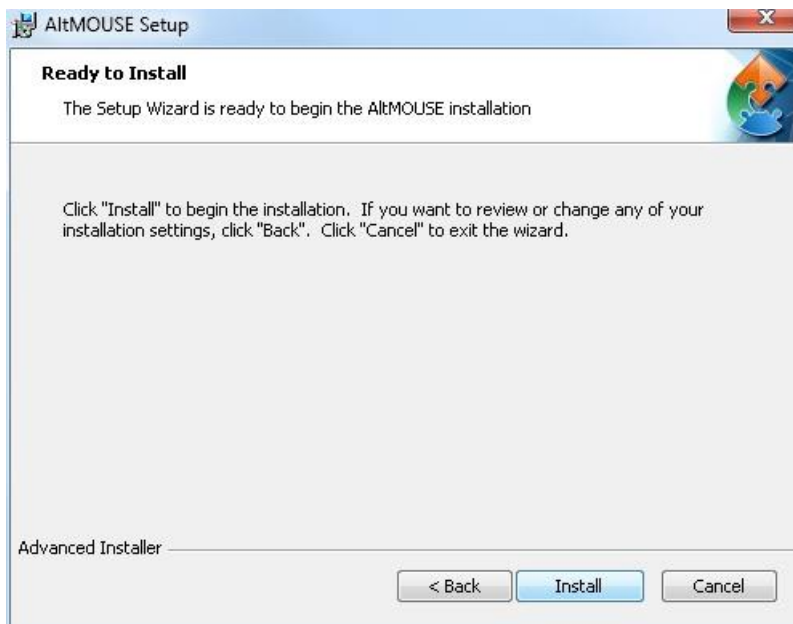


Click 'Next'

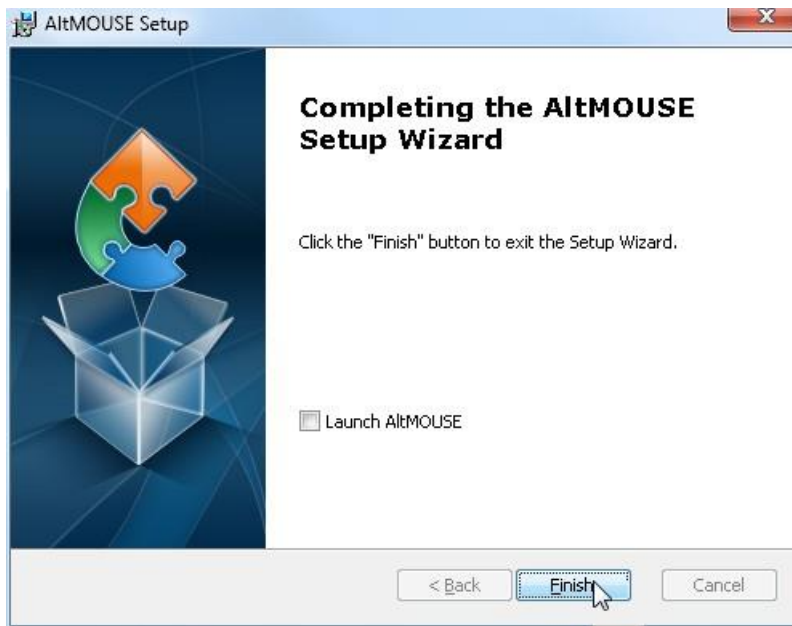


Click 'Next'.

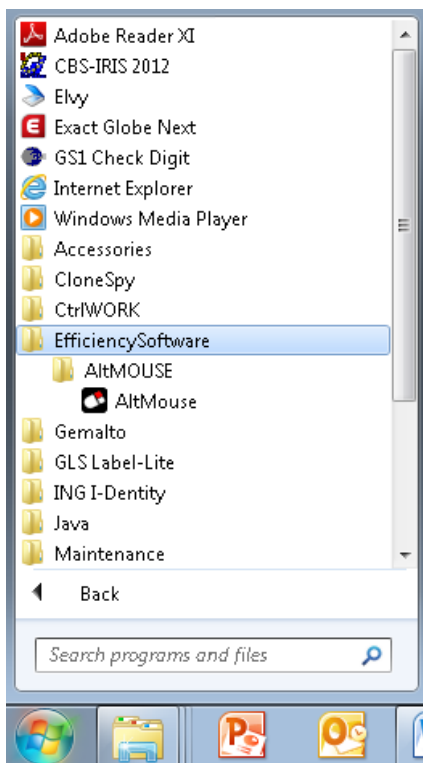
Note: the folder EfficiencySoftware will be created. The folder EfficiencySoftware contains the AltMOUSE program.



Click 'Install'



AltMOUSE can be started either by selecting the Launch AltMOUSE button or via Start-All Programs-EfficiencySoftware-AltMOUSE.



## Startup for the first time

The following screens you will see when AltMOUSE is started up for the first time.



Select the language you would like.



Select the amount of shortcut keys you would like to learn in a week.



## Support

Please contact us directly via the form on

<https://www.bakkerelkhuisen.nl/support/software/altmouse/>

FAQs and other materials can be found via

<https://www.bakkerelkhuisen.com/productsupport/software/altmouse/>